



LA National Guard Emergency Management Bulletin

January 2019
Volume FY19 Issue 4



Purpose

The National Guard (NG) Emergency Management (EM) program is responsible for all activities and operations related to preparing for, mitigating the potential effect of, preventing, responding to, and recovering from all multi-agency and/or multi-jurisdictional emergencies on or impacting NG installations nationwide. The NG EM Program functions within an all-hazards environment consisting of all natural, technological (man-made), and terroristic hazards.

Vision

To provide the NG EM services when and where they are needed with the joint and interagency capacity necessary to effectively and efficiently protect the NG community and mission capabilities from all hazards.

Mission

To provide integrated and comprehensive NG EM services necessary to protect our community and mission capabilities from all hazards in a cost effective, implementable, and sustainable manner through resiliency.

LANG EM WEB PAGE:

<http://geauxguard.la.gov/resources/emergency-management/>



IMPORTANT NUMBERS TO KNOW

EMERGENCY
Fire-Police-Ambulance
911

Michael Green 504-278-8031
LMD Emergency Management Program
Coordinator
michael.s.green39.mil@mail.mil

CPT Bobby Woods 318-290-5869
Camp Beauregard AT/ EM Manager
bobby.k.woods.mil@mail.mil

Cristina Steib 504-278-8011
Jackson Barracks EM Manager
cristina.m.steib.mil@mail.mil

MAJ Michael Dunn 225-319-4675
GWLC AT/ EM Manager
michael.w.dunn20.nfg@mail.mil

LTC Harry Wilson 318-382-4151
Camp Minden AT/ EM Manager
harry.w.wilson2.mil@mail.mil

LA National Guard Joint Operation
Center 888-278-8748

GOHSEP 225-925-7500

American Red Cross
1-800-RED-CROSS

Federal Emergency Management
Agency 1-800-621-FEMA

National Poison Control Center
1-800-222-1222

National Domestic Violence Hotline
1-800-799-7233



EMERGENCY MANAGEMENT

New Years is all about fresh starts and new beginnings. As we welcome 2019, many of us are in the frame of mind to make bold changes within our lives and be able to start the New Year with a new start having some goals and ambitions in this life.

Why not make a New Year's Resolution this year to create a Family Communication Plan for your Family.

Our focus this month is on planning for unique needs, creating an Emergency Communication Plan and winter driving tips. I hope you will find the information in this month's bulletin very useful.

The best time to prepare is before the event happens. Always Remember, "Be Prepared".

Michael Green
Emergency Manager Program Coordinator
michael.s.green39.mil@mail.mil





Unique Needs

Think about your Family's unique needs and circumstances and plan ahead.

Be Informed

Identify all hazards that can affect you and your Family. Know the local emergency warning system in your area. Know the appropriate emergency actions. If you live abroad, know your local emergency procedures and how you will receive information. Include cash in the local currency and important translations in your emergency kit.

Make a Plan

Make a Family emergency plan. Consider the range of possibilities and places you might be. Plan reactions to various emergencies. Plan how your Family can stay in touch., Practice your plan. People with temporary or long-term challenges must take a proactive approach to ensure that their safety needs are included in all emergency planning. Look into special assistance programs that may be available in your community. Register with the Army Installation or local office of emergency services, local fire department and local utilities to get priority assistance.



Build a Kit

Update your emergency plans and kits to reflect your current needs. Consider the basics of survival and the unique needs of your Family including pets. Include enough supplies for at least three days. Assemble emergency supplies in your home, car and workplace. Include items such as baby food, diapers, food for service animals, or eye glasses. Be ready in case you must evacuate quickly.

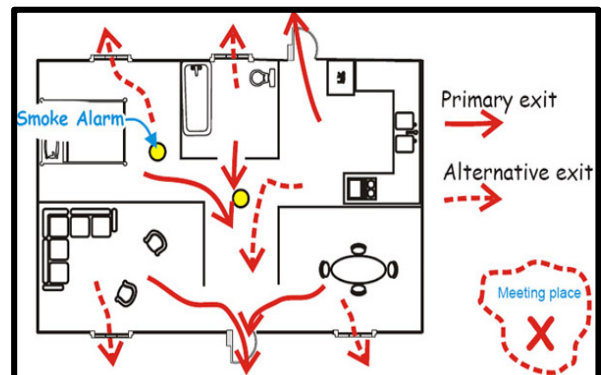
Get Involved.

Everyone has a role in preparedness. Prepared individuals build stronger communities.

Train: In an emergency, you may be the first person on the scene. Trained communities more effectively prepare and respond to emergencies.

Volunteer: Consider giving back to your community. Donate time and resources to local organizations.

Share: Consider integrating emergency preparedness into existing activities. Share preparedness with others, especially children.





Create Your Family Emergency Communication Plan

COLLECT INFORMATION

Creating your Family Emergency Communication Plan starts with one simple question: “What if?” “What if something happens and I’m not with my family?” “Will I be able to reach them?” “How will I know they are safe?” “How can I let them know I’m OK?” During a disaster, you will need to send and receive information from your family.

Communication networks, such as mobile phones and computers, could be unreliable during disasters, and electricity could be disrupted. Planning in advance will help ensure that all the members of your household—including children and people with disabilities and others with access and functional needs, as well as outside caregivers—know how to reach each other and where to meet up in an emergency. Planning starts with three easy steps:

HOUSEHOLD INFORMATION

Write down phone numbers and email addresses for everyone in your household. Having this important information written down will help you reconnect with others in case you don’t have your mobile device or computer with you or if the battery runs down. If you have a household member(s) who is Deaf or hard of hearing, or who has a speech disability and uses traditional or video relay service (VRS), include information on how to connect through relay services on a landline phone, mobile device, or computer.



SCHOOL, CHILDCARE, CAREGIVER, AND WORKPLACE EMERGENCY PLANS

Because a disaster can strike during school or work hours, you need to know their emergency response plans and how to stay informed. Discuss these plans with children, and let them know who could pick them up in an emergency. Make sure your household members with phones are signed up for alerts and warnings from their school, workplace, and/or local government. To find out more about how to sign up, see Know Your Alerts and Warnings at ready.gov. For children without mobile phones, make sure they know to follow instructions from a responsible adult, such as a teacher or principal.

OUT-OF-TOWN CONTACT

It is also important to identify someone outside of your community or State who can act as a central point of contact to help your household reconnect. In a disaster, it may be easier to make a long-distance phone call than to call across town because local phone lines can be jammed.

EMERGENCY MEETING PLACES

Decide on safe, familiar places where your family can go for protection or to reunite. Make sure these locations are accessible for household members with disabilities or access and functional needs. If you have pets or service animals, think about animal-friendly locations. Identify the following places:

- Indoor: If you live in an area where tornadoes, hurricanes, or other high-wind storms can happen, make sure everyone knows where to go for protection. This could be a small, interior, windowless room, such as a closet or bathroom, on the lowest level of a sturdy building, or a tornado safe room or storm shelter.





Create Your Family Emergency Communication Plan Continued

EMERGENCY MEETING PLACES

- In your neighborhood:** This is a place in your neighborhood where your household members will meet if there is a fire or other emergency and you need to leave your home. The meeting place could be a big tree, a mailbox at the end of the driveway, or a neighbor's house.
- Outside of your neighborhood:** This is a place where your family will meet if a disaster happens when you're not at home and you can't get back to your home. This could be a library, community center, house of worship, or family friend's home.
- Outside of your town or city:** Having an out-of-town meeting place can help you reunite if a disaster happens and:
 - You cannot get home or to your out-of-neighborhood meeting place; or
 - Your family is not together and your community is instructed to evacuate the area.

This meeting place could be the home of a relative or family friend. Make sure everyone knows the address of the meeting place and discuss ways you would get there.

OTHER IMPORTANT NUMBERS AND INFORMATION

You should also write down phone numbers for emergency services, utilities, service providers, medical providers, veterinarians, insurance companies, and other services.

SHARE. MAKE SURE EVERYONE HAS THE INFORMATION

- Make copies of your Family Emergency Communication Plan** for each member of the household to carry in his or her wallet, backpack, or purse. Post a copy in a central place at home. Regularly check to make sure your household members are carrying their plan with them.
- Enter household and emergency contact information** into all household members' mobile phones or devices.
- Store at least one emergency contact** under the name "In Case of Emergency" or "ICE" for all mobile phones and devices. This will help someone identify your emergency contact if needed. Inform your emergency contact of any medical issues or other requirements you may have.
- Create a group list** on all mobile phones and devices of the people you would need to communicate with if there was an emergency or disaster.
- Make sure all household members and your out-of-town contact** know how to text if they have a mobile phone or device, or know alternative ways to communicate if they are unable to text.
- Read Know Your Alerts and Warnings** at ready.gov and sign up to receive emergency information.

NOW IT'S TIME TO PRACTICE!

Once you have completed your Family Emergency Communication Plan, made copies for all the members of your household, and discussed it, it's time to practice!

Here are some ideas for practicing your plan:

- Practice texting and calling.** Have each person practice sending a text message or calling your out-of-town contact and sending a group text to your mobile phone group list.
- Discuss what information you should send by text.** You will want to let others know you are safe and where you are. Short messages like "I'm OK. At library" are good.



Winter Driving Tips

Winter driving presents a number of challenges to you and your car. Cold weather tests the limits of your car's mechanical abilities. Treacherous conditions test your abilities as a driver. If you're not careful, you could find yourself sliding towards a guard rail, wondering if your affairs are in order. It pays to be prepared. Here are some tips to get ready for snow and sleet-covered roads, and dipstick-freezing temperatures. We hope you find these tips useful.

If your car needs regular service, get it done now!

Nothing's a big deal in the summer. You break down? So what? It's a nice night out. Look at all those stars! But break down when it's minus jaw-freezing outside, and that's a different story. Since bad hoses, belts, water pumps and spark plug wires can leave you stranded in the winter, it's better to bite the bullet and fix them. It's better than spending the same amount of money after you've been sitting in your stalled car for three hours waiting for AAA.



Here's one service item that's often forgotten: tire pressure. Ask your mechanic to check it, or do it as soon as winter arrives. Why? Because tire pressure drops by about one pound per ten degrees of temperature. So, if it's -10 now, and the last time you checked your tire pressure was back during that sweltering heat wave in July, your tires will be dangerously low and will jeopardize your car's handling. Many newer vehicles have tire pressure monitors, which alert you to dangerous changes in tire pressure. In fact, as of 2008, tire pressure monitors are required on all new vehicles. But older cars don't have them and the pressure needs to be checked manually.

Make sure your battery and charging system are up to snuff. Your mechanic should check the battery, charging system, and belts. Your battery can leave you stranded simply because it's old and lousy. Or it could leave you stranded because your charging system isn't working well, and the battery isn't getting charged properly. So have your mechanic check the battery and charging system.

If you find that you need a new battery, get the biggest, meanest, ugliest battery that will fit in your car. Two things to remember about batteries: First, the battery that started your car easily in the summer may not have enough oomph to do it in winter. In winter, the engine is harder to start, because the oil isn't as "fluid" as it was last July. And secondly, batteries lose power as the temperature drops (you remember your high school chemistry, right?). So not only do you need MORE power to start the engine in winter, you also get LESS power from the same battery.



Batteries are rated by a measure called "cold cranking amps" (CCA), the maximum number of amps that the battery can deliver at zero degrees (F) for 30 seconds. Good, powerful batteries are rated at or above 600 CCA. We've never really liked this CCA rating because some batteries rated at 600 CCA can just barely make the 30-second criterion, and some can pump it out much longer - clearly better batteries. Along came our pals at Consumer Reports. When they rate batteries, they do the CCA test and report how long the battery puts out the 600 amps. So take a look at their ratings for the lowdown.



Check the cooling system.

Make certain the antifreeze will protect your car at the winter temperatures you'll experience in your area. For most areas, you'll need a 50-50 mix of coolant to water. You may think, "I'll be extra good to my car, and give it 100% coolant." Guess what? You're wrong. The 50-50 mix has a lower freezing point. Not only that, but 100% coolant is less able to transfer heat away from your engine, and has been known to cause such nasty things as melted spark plugs of engine failure under the wrong circumstances. So, mix it up!

Protection	Freeze-up Protection	Boilover Protection	Corrosion Protection
Minimum 50% antifreeze 50% Water	-34 degrees F	+265 degrees F	Exceeds all ASTM and SAE standards for corrosion protection
Maximum 70% antifreeze 30% Water	-84 degrees F	+276 degrees F	

You can check the freeze rating of your car's coolant yourself with a little device that you can buy in an auto part store for a couple of bucks. With it you suck up a little of the anti-freeze from the radiator - or the overflow container - and see how many of the little balls float. It's cute. If this is beyond you, most real gas stations will do it for you in a couple of minutes. By the way, having good coolant in your engine is very important because if the coolant freezes, it expands, and it's bye-bye engine block. And that means bye-bye to the 50-inch plasma TV you've been saving up for.

But that's still only half the story. The other primary function of antifreeze is to keep your cooling system from rusting. The rust inhibitors in antifreeze break down over time and need to be renewed. So, at a minimum, change your engine's coolant at the interval recommended by your manufacturer. Besides, draining out the coolant and refilling the system also removes dirt and rust particles that can clog up the cooling system and cause problems, regardless of the season.



There are two primary types of coolants available on the market today. The first is traditional, green-colored antifreeze, which can be used in any car. The second is a newer, long-life coolant, which comes in a variety of colors. It should only be used in recent-model cars because it may damage some of the engine gaskets in older cars. If you're not sure whether your car uses the new or old-style antifreeze, check with your manufacturer.

In a pinch, the new and the old coolants can be mixed- but if you do that, you should drain the cooling system next time your car is in for service. The rust-inhibiting additives in the two coolants can actually counteract each other and, over a long period of time, allow the cooling system to rust. It takes a long time for this damage to occur, so you don't have to rush home and drain the system. But do take care of it promptly, so you don't forget and find yourself slapping your credit card down for an engine rebuild, a few years later.



Make sure your windshield wipers are in good shape.

Winter wipers - with the rubber coverings that keep ice from collecting on the blade - have become very popular. They're great in the winter, but make sure you take them off in the spring. Winter wipers are heavy, and if you use them all summer, you'll wear out the wiper motor prematurely.

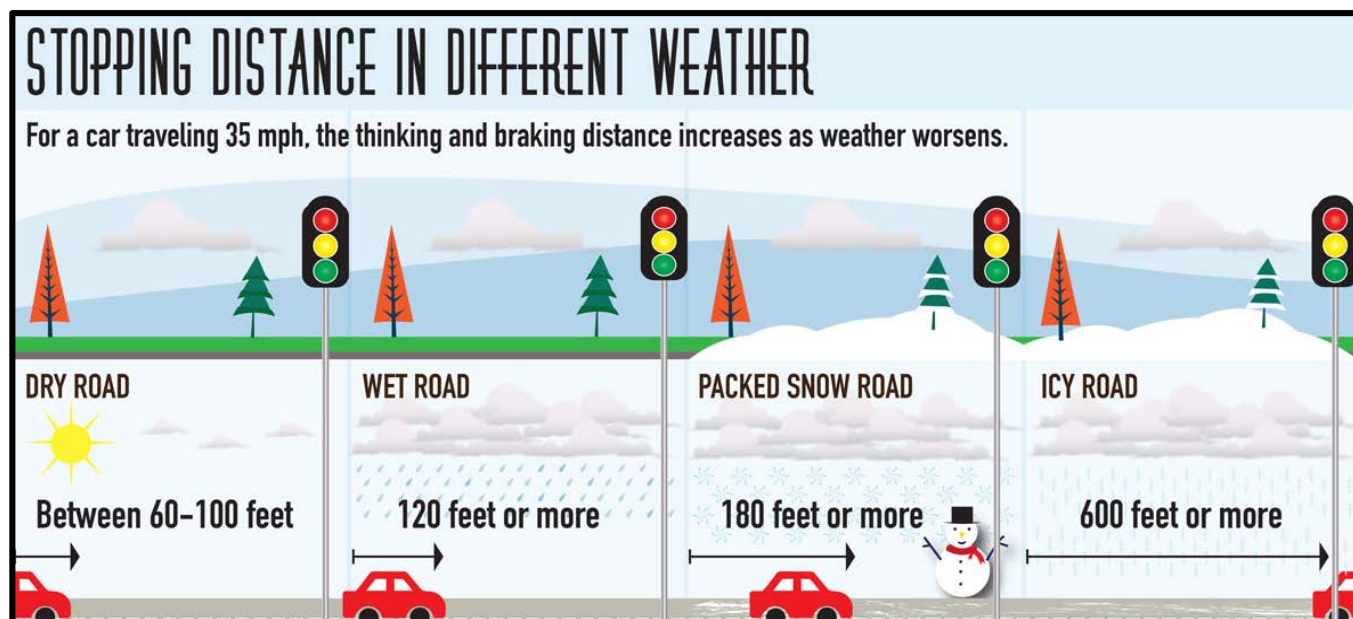
And when using your wipers in the winter, remember to turn them off **BEFORE** shutting off the engine. Why? Water frequently freezes overnight during the winter. And if your blades freeze to the windshield, when you go to start your car, the wiper motor may burn out trying to get them back to the "rest position," while you're sitting there wondering, "What's that burning smell?"

Keep your gas tank close to full.

In the summer, you can take a chance and run down to fumes. But in the winter, if you do get stuck or stranded, the engine will be your only source of heat. And you don't want to have to worry about conserving fuel and saving the planet right at that moment...you want to stay warm. You can run the engine indefinitely at idle to stay warm-or as long as you have gas. No harm will be done to the engine.

By the way, if you have an old jalopy, we suggest you crack open the window a bit if you are going to be idling the engine. Old jalopies are more likely to suffer from exhaust leaks and rust holes. This may not be a problem while you're driving because the wind is removing the exhaust as you move forward; but if you're sitting for a long time while carbon monoxide is slowly leaking into the passenger compartment, it is a recipe for disaster.

Finally, if you are pulled over and stopped in the midst of a humungous snowstorm, be sure to get out periodically and remove snow from behind the tailpipe to keep it unobstructed.





JANUARY EVENTS

1 January	Happy New Year	Nationwide
11 January	LA. Fur and Wildlife Festival	Cameron
18 January	Louisiana Marathon	State Capitol Park
21 January	MLK Day Celebration	Nationwide
21 January	Krewe of Harambee Parade	Shreveport
26 January	12 th Annual Gumbo Cook Off	Opelousas

Message from OPSEC

INTERAGENCY OPSEC SUPPORT STAFF
2019 Calendar | Think. Protect. OPSEC. | www.ioss.gov

Not all Heroes
wear Combat Boots

OPSEC ...It's everyone's responsibility!

2018 Poster Contest Winner