



LA National Guard Emergency Management Bulletin

May 2024
Volume FY24 Issue 8



Purpose

The National Guard (NG) Emergency Management (EM) program is responsible for all activities and operations related to preparing for, mitigating the potential effect of, preventing, responding to, and recovering from all multi-agency and/or multi-jurisdictional emergencies on or impacting NG installations nationwide. The NG EM Program functions within an all-hazards environment consisting of all natural, technological (man-made), and terroristic hazards.

Vision

To provide the NG EM services when and where they are needed with the joint and interagency capacity necessary to effectively and efficiently protect the NG community and mission capabilities from all hazards.

Mission

To provide integrated and comprehensive NG EM services necessary to protect our community and mission capabilities from all hazards in a cost effective, implementable, and sustainable manner through resiliency.

LANG EM WEB PAGE:

<http://geauxguard.la.gov/resources/emergency-management/>



IMPORTANT NUMBERS TO KNOW

EMERGENCY
Fire-Police-Ambulance
911

Michael Green 504-278-8031
LMD Emergency Management Program
Coordinator
michael.s.green39.nfg@army.mil

1LT Damilola Babalola 318-290-5869
LTC-P EM Manager
damilola.i.babalola.mil@army.mil

Peter Knight 504-278-8011
Jackson Barracks AT/ EM Manager
peter.d.knight2.nfg@army.mil

Chris Letendre 225-319-4667
GWLC EM Manager
christopher.a.letendre.nfg@army.mil

CPT Jason Medcalf 318-299-4151
Camp Minden EM Manager
jason.a.medcalf.mil@army.mil

LA National Guard Joint Operation
Center 888-278-8748

GOHSEP 225-925-7500

American Red Cross
1-800-RED-CROSS

Federal Emergency Management
Agency 1-800-621-FEMA

National Poison Control Center
1-800-222-1222

National Domestic Violence Hotline
1-800-799-7233



EMERGENCY MANAGEMENT

Spring is here and along with it comes evening thunderstorms and mosquitoes. We all want to get outside after the long cold winter to mow yards, plant flowers and gardens, fish or just relax. When going outside, we must always remember to protect ourselves from mosquitoes. It is safe to say that mosquitos have been around since time began. Though the loss of blood is seldom of any importance to the victim, the saliva of the mosquito often causes an irritating rash that is a serious nuisance.

This month our bulletin will focus on pets, tornadoes with lightning, and mosquitos. All can become deadly if we do not take the proper precautions.

Don't let yourself or your families become a statistic. Please utilize the information in this month's bulletin to educate your family on disease spreading mosquitoes and how to keep them under control.

The best time to prepare is before the event happens. Always Remember, "Be Prepared".



Michael Green
Emergency Manager Program Coordinator
michael.s.green39.nfg@army.mil



PETS IN EMERGENCIES

When preparing for an emergency, be sure to include arrangements for your pets. Your emergency supply kit should contain provisions including food and water for your pets. Know in advance how you will handle your pets if you need to evacuate. If you must leave them behind, make sure they have access to food, water and shelter.

Preparing to Take Your Pets

When an emergency occurs, pets may become frightened. Allow extra time to secure your pet.

- Make a plan for your pet.
- Talk with your vet about any special considerations.
- Ask a neighbor to evacuate or care for your pet in case you are separated.
- Locate pet-friendly hotels or shelters in advance for use in an emergency.
- Make a pet emergency supply kit. Include food, water, medications, leash, carrier, toy and veterinary and insurance documents. Include a photograph of your pet in case you are separated.
- Make sure your pets' identification tags are up to date and secured on their collars. Consider micro chipping your pets. If you have advance warning of an emergency, add a tag with your evacuation information.

What to Do With Your Pets During an Emergency

- Bring pets inside immediately and place them in a contained room. Many times pets run away or hide when they sense danger. Never leave them tied up outside, and remember that pets may experience behavioral changes due to stress.
- If you are told to evacuate and you can bring your pets:
 - Take enough supplies and food for at least three days and a small toy for your pet.
 - Make sure the carrier is secure and tagged with your pet's name, description and contact details.
 - Be responsible for your pets by cleaning up after them and making sure they are not causing problems.
 - Many shelters do not allow pets. You may have to board your pets or place them in a shelter prepared for evacuated pets.



LA National Guard Emergency Management Bulletin

May 2024
Volume FY24 Issue 8



- If you are told to evacuate and are ordered not to bring your pets:
 - Bring your pets inside. Never leave your pets outside during an emergency.
 - Leave plenty of food and water.
 - Take the toilet seat off and brace the bathroom door open so they can drink.
 - Place a notice on your door that your pets are inside. List the type and number of animals on your property, your name, phone number and the name and phone number of your veterinarian.
 - Make arrangements for someone to visit your pet until you can return.



What to Do with Your Pets After an Emergency

- Keep close contact with your pets to make them feel safer.
- Keep your pets on a leash when possible so they stay with you.
- Understand that your pets may have some behavioral changes because of trauma.
- Be responsible for your pets at all times by cleaning up after them and keeping them away from others.



IF YOU HAVE PETS: What you need to know:

- A small number of pets worldwide, including cats and dogs, have been reported to be infected with the virus that causes COVID-19, mostly after close contact with people with COVID-19.
- Based on the information available to date, the risk of animals spreading COVID-19 to people is considered to be low.
- The virus that causes COVID-19 can spread from people to animals in some situations, mostly during close contact.
- Treat pets as you would other human family members – do not let pets interact with people outside the household.
- If a person inside the household becomes sick, isolate that person from everyone else, including pets.



Prevent Mosquito Bites



Protect yourself and your family from mosquito bites

Use Environmental Protection Agency (EPA)-registered insect repellents with one of the active ingredients below. When used as directed, EPA-registered insect repellents are proven safe and effective, even for pregnant and breastfeeding women.

Tips for Everyone

- * Always follow the product label instructions.
- * Reapply insect repellent as directed.
 - * Do not spray repellent on the skin under clothing.
 - * If you are also using sunscreen, apply Sunscreen first and insect repellent second.


Tips for Babies & Children

- * Always follow instructions when applying insect repellent to children.
- * Do not use insect repellent on babies younger than 2 month old.
- * Do not apply insect repellent onto a child's hands, eyes, mouth, and cut or irritated skin.
- * Adults: Spray insect repellent onto your hands and then apply to a child's face.
- * Do not use products containing oil of lemon eucalyptus (OLE) or paramenthane-diol (PMD) on children under 3 years old.

Natural insect repellents (repellents not registered with EPA)

- * We do not know the effectiveness of non-EPA registered insect repellents, including some natural repellents.
- * To protect yourself against diseases spread by mosquitoes, CDC and EPA recommend using an EPA-registered insect repellent.
- * Choosing an EPA-registered repellent ensures the EPA has evaluated the product for effectiveness.

Active ingredient
Higher percentages of active ingredient provide longer protection
DEET
Picaridin (known as KBR 3023 and icaridin outside the US)
IR3535
Oil of lemon eucalyptus (OLE) or para-menthane-diol (PMD)
2-undecanone



Find the insect repellent that's right for you by using EPA's search tool*.



Tips for Everyone

- * Dress your child in clothing that covers arms and legs.
- * Cover crib, stroller, and baby carrier with mosquito netting.

Wear long-sleeved shirts and long pants

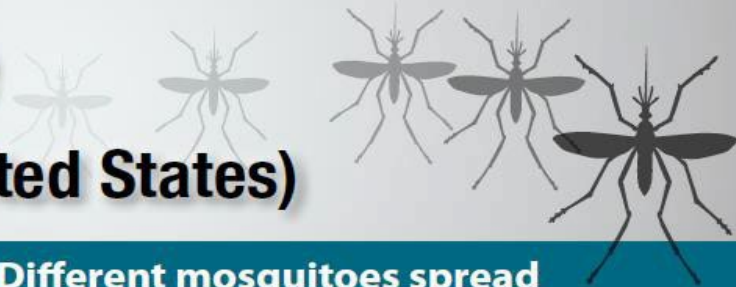
- * Treat items, such as boots, pants, socks, and tents with permethrin or buy permethrin-treated clothing and gear.
 - * Permethrin-treated clothing will protect you after multiple washings. See product Information to find out how long the protection will last.
 - * If treating items yourself, follow the product instructions.
 - * Do not use permethrin products directly on skin.



* In some places, such as Puerto Rico, where permethrin products have been used for years in mosquito control efforts, mosquitoes have become resistant to it. In areas with high levels of resistance, use of permethrin is not likely to be effective.



Mosquito Bite Prevention (United States)



Not all mosquitoes are the same. Different mosquitoes spread different viruses and bite at different times of the day.

Type of Mosquito

Viruses spread

Biting habits



Aedes aegypti,
Aedes albopictus

Chikungunya,
Dengue, Zika

Primarily daytime, but
can also bite at night



Culex species

West Nile

Evening to morning



PROTECT YOURSELF from MOSQUITO BITES

Mosquitoes spread Zika and other viruses.



Daytime is the most dangerous

Mosquitoes that spread Zika are aggressive daytime biters. They can also bite at night.



Use insect repellent It works!

Look for the following active ingredients: DEET, picaridin, IR3535, oil of lemon eucalyptus or para-menthane-diol, or 2-undecanone



Wear protective clothes

Wear long-sleeved shirts and long pants or use insect repellent. For extra protection, treat clothing with permethrin.



Mosquito-proof your home

Use screens on windows and doors. Use air conditioning when available. Keep mosquitoes from laying eggs near standing water.



U.S. Department of Health and Human Services
Centers for Disease Control and Prevention

For more information: www.cdc.gov/zika

CS263829-B
October 11, 2016 3:15 PM



Lightning The Underrated Killer

Cows have a tendency to “pile up” against the fences during storms with many leaning against the wire. All these cows were killed by a single lightning strike.



Every Thunderstorm Contains Lightning.

Lightning is an incredibly powerful electrical discharge, containing up to 100 million volts of electrical charge and capable of reaching 50,000 degrees Fahrenheit. Cloud to ground lightning is the result of incredible differences in electrical charge which forms within thunderstorms as well as between thunderstorms as well as between thunderstorms is the key to creating the massive charge differences which lead to lightning. Thunderstorm updrafts and downdrafts work to separate smaller ice particles from larger hail stones within the storm. As this happens many of the ice pieces collide, resulting in a separation of electrical charge. The Higher part of the storm contains primarily positively charged particles gathers near the ground. Eventually a brief electric circuit is created as a negatively charged “step leader” descends from the storm toward the ground and connects to the positive charge on the ground. The extreme heating of the air from lightning causes a rapid expansion of the air around it, leading to thunder. The sound of thunder will travel away from lightning at a

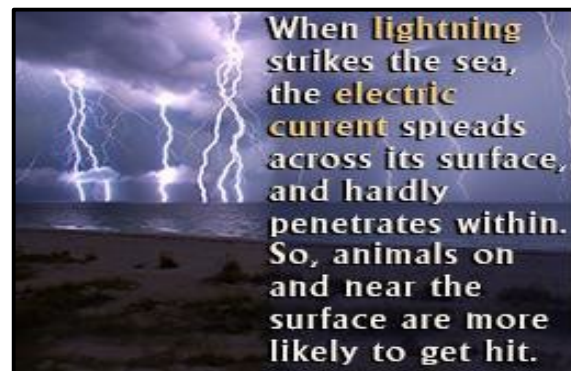
Speed around one mile every seconds. Being in the vicinity of lightning is obviously dangerous. However, if you can hear thunder in the distance but can't visually observe lightning, you are still in danger. Lightning can strike up to the ten miles from a thunderstorm. When thunder roars, go indoors!

Lightning Safety Rules – Outdoors

- Seek shelter inside a house, large building or an all metal vehicle with the Window rolled up (avoid convertibles or open top cars). It is the metal frame that protects from lightning, not the tires.
- If your hair stands on end and your skin tingles...lightning is about to strike. take cover immediately!
- When boating, or in the water, head for shore and get into a shelter, or vehicle.

AVOID

- Large trees, hilltops and other high places. Don't be the tallest object! Never seek shelter under a tree.
- Chain link fences and any other metal fences like those around ball parks and play grounds.
- Sport dugouts and open park pavilions.
- Motorcycles, scooters, golf carts, small metal sheds, bicycles, tractors and farm equipment that does not have an enclosed metal cab.



Lightning Safety Rules – Indoors

- Stay away from windows.
- Avoid telephones and electrical appliances (wires connecting to these devices run outside of the home and act as lightning rods). Don't wash dishes or take a shower. The pipe will conduct electricity.
- Unplug computers and other sensitive electrical devices (time permitting) since surge suppressors may not protect these items if lightning hits close to the home.
- There is not truth to the old myth hat “lightning never strikes the same place twice.”
- If a person is struck by lightning, there is no residual charge left in the body. The quick application of CPR may maintain vital body functions until medical help can be obtained.

WHEN THUNDER ROARS, GO INDOORS!



Tornado Safety Tips

When a tornado warning is issued:

- Get inside a sturdy, well build structure.
- Get into a storm shelter or into an interior room on the lowest level floor of the structure with no windows, such as a hallway, a bathroom, or a closet.
- Use something to protect your head such as a helmet, blankets, mattresses, pillows, cushions.
- Use something that will provide more protection than just your hands.
- If you are in a car: do not try to outrun a tornado. Take shelter in a sturdy building nearby. If none is available, get out of the car and get into the lowest part of the ground such as a ditch.
- Never take shelter under highway overpasses. Many are not constructed properly to provide adequate shelter, especially as the wind speeds increase as the tornado passes over.
- Mobile homes are not safe shelters. Plan to take shelter in a sturdier building nearby, or if no other shelter is available, get low to the ground in a ditch.
- For those in schools, nursing homes, hospitals, airports and shopping centers: take shelter in the designated shelter area. Stay away from large windows or glassed areas. Stay away from large rooms like dining halls, gymnasiums, or warehouses because they have weakly supported roofs.

Develop a tornado preparedness plan in advance:

Do not wait until the tornado is on your doorstep to decide where to go, or what to do. Tornadoes form very quickly and may do so with little or not advance warning. You may only have a few seconds to find shelter. Thus, it is important to act quickly and know where you need to go.



Outside walls of these homes collapsed after being struck by a tornado. Interior walls remain standing. Both of these photos show why being in the interior portion of a home/building is important, and why wearing a helmet is a good idea.



Going out of town?

Remember OPSEC at home, too.



Disguise the nature of your
“Mission”:

- Have a trusted friend or relative pick up your mail and newspapers
- Put your lights on a timer
- Be careful if using social networking sites, which can broadcast your vacation to the world!
- What else is giving you away?

You “Do” OPSEC

www.opsecprofessionals.org



Who cares if I'm stalking you with a
fake profile?

I can already feel us
getting closer.



someecards
user card